

PART OF THE SW 1/4, OF SECTION 9, T.6N., R.2E., S.L.B. & M.  
**HILL COUNTRY ESTATES AMENDED LOT 2**

IN WEBER COUNTY

TAXING UNIT: 231

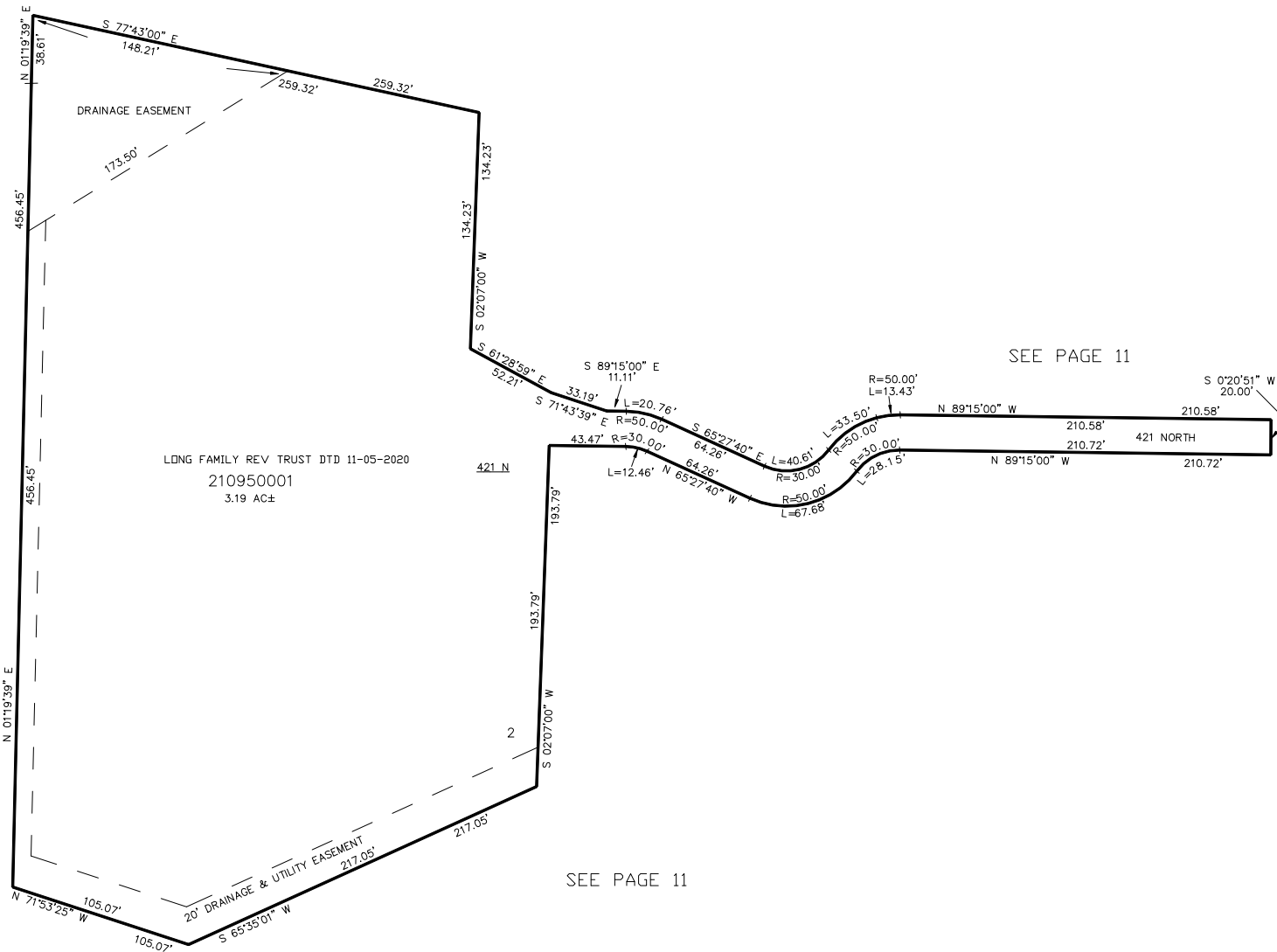
SCALE 1" = 50'

SEE PAGE 11

SEE PAGE 11

SEE PAGE 11

FOR COMPLETE ENG DATA SEE  
 ORIGINAL DEDICATION PLAT IN  
 BOOK 54, PAGE 94 OF RECORDS.



10' UTILITY & DRAINAGE EASEMENTS EACH  
 SIDE OF PROPERTY LINES AS INDICATED  
 BY DASHED LINES EXCEPT AS OTHERWISE  
 SHOWN.